

[Skip navigation](#)

- 
- 
- 

- [News](#)
- [Downloads](#)
- [Career](#)
- [Contact](#)

• [Filter Units](#)

- [Pocket filter](#)
 - [INFA-JET AJN](#)
- [Cartridge filter](#)
 - [Cartridge filter INFA-JETRON IPF](#)
 - [INFA-MINI-JET AJM](#)
 - [INFA-VARIO-JET AJV](#)
- [Bag filter](#)
 - [INFA-VARIO-JET AJV](#)
 - [INFA-MINI-JET AJM](#)
- [Pleated element filter](#)
 - [INFA-LAMELLEN-JET AJL](#)
 - [INFA-LAMELLEN-JET AJL Duo](#)
- [HEPA filter](#)
 - [INFA-MICRON MKR](#)
 - [INFA-MICRON MPR](#)
- [Shaking filter](#)
 - [INFA-MAT AM](#)
 - [INFA-BOY IFB](#)
- [Top filter](#)
 - [Infa-Mat AM204](#)
 - [Infa-Vario-Jet IPV](#)
 - [Top filter INFA-JETRON AJP ..2](#)
 - [Silo filter INFA-JETRON AJB](#)
 - [Silo filter INFA-JETRON AJP](#)
- [Special applications](#)
 - [INFA-INLINE-FILTER INF](#)
 - [Dust-contolled bag dumping](#)

• [Solutions](#)

- [Industries](#)
 - [Stones, soils, minerals](#)
 - [Cement, lime, gypsum](#)
 - [Steel, iron, NF metals](#)

- [Food products](#)
- [Chemistry, pharmaceutical industry](#)
- [Energy](#)
- [Recycling, disposal](#)
- [Glass, ceramic industry](#)
- [Paints, lacquers, surfaces](#)
- [Plastics](#)
- [Applications](#)
 - [Dedusting tablet production](#)
 - [Dedusting sack emptying](#)
 - [Dedusting conveyors](#)
 - [Dedusting waste recycling](#)
 - [Dedusting working places](#)
 - [Dedusting production of baby food](#)
 - [Dedusting glass production](#)
 - [Dedusting wood working](#)
 - [Dedusting mixing and filling plants](#)
 - [Dedusting radioactive residues](#)
 - [Dedusting recycling materials](#)
 - [Dedusting ship unloading](#)
 - [Silo dedusting](#)
 - [Dedusting spray drying](#)
 - [Dedusting steel production](#)
 - [Dedusting plastics](#)
- [Service](#)
 - [Service features](#)
 - [Spare parts service](#)
 - [Downloads](#)
 - [Downloads Powtech 2023](#)
- [Knowledge of dust removal](#)
 - [Encyclopaedia about dedusting](#)
 - [Dedusting](#)
 - [Planning](#)
 - [Depth filter](#)
 - [Cleanable filter](#)
 - [Filter cleaning](#)
 - [Explosion protection](#)
 - [Filter media](#)
 - [Containment](#)
 - [Legal regulations](#)
 - [Glossary](#)
 - [Bulk densities](#)
- [Company](#)
 - [About us](#)
 - [Job & Karriere](#)
 - [History](#)
 - [Videos](#)

- [Infastaub news](#)
 - [News](#)
 - [Fair dates](#)
 - [Newsletter](#)
 - [Contact](#)
 - [Infastaub GmbH](#)
 - [Infastaub worldwide](#)
 - [Contact form](#)
-
- [News](#)
 - [Downloads](#)
 - [Career](#)
 - [Contact](#)
-
- [Infastaub.de](#)
 - [Company](#)
 - [Infastaub news](#)
 - [News](#)

News

Central exhaust systems

13.12.2017 News

Central dust exhaust systems are used when large quantities of product spillages occur. This often happens in industries that work with bulk solids and e. g. where a numerous number of elevator and conveyor belt transition points are installed.

Using a central dust exhaust system with a widespread pipe system and many sockets, the dust spilled on the floor can be sucked in from every spot. A flexible suction hose is plugged in the socket of the suction pipe if required. The dust is aspirated by suction pressure that is generated by a vacuum pump and then guided to the filter unit. A big part of the dust lands in the filter's hopper. The fine dust fraction is separated on the filter media and dropped into the hopper by an efficient and full automatically cleaning with pressurized air. The dust disposal is usually made by rotary valves, whereas the dust can be collected centrally and returned to the production process.

Project for potash

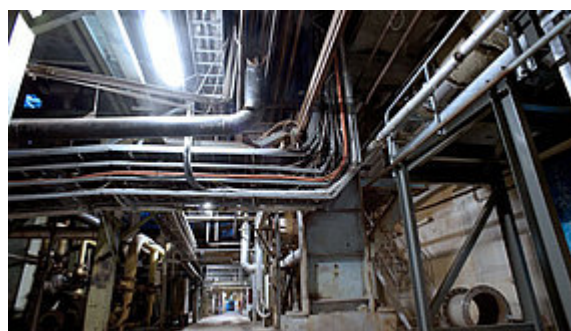
Potash was generated several hundred million years ago, but not discovered until 1856. It proved very fast to be a powerful fertiliser. The second largest volume worldwide is located in the Russian region Perm. There, the Russian group EuroChem exploits with a greenfield project an extensive deposit and production site. The exploitation and processing facility will be commissioned end of 2017.

Part of the capital expenditure are nine pocket filters of the series Infa-Jet AJN. The filter units, reinforced for suction pressure down to 0.5 bar, are designed for a dust load < 20 g/m³ and a volume flow of 3,000 m³/h each. Delivery is carried out by Infastaub RUS.

Project for a steel works

Kazakhstan has a fabulous wealth of natural resources and is also worldwide well up mining. A concentration of resources is in the region Aktobe. The most important company for mining of chrome ore including processing is the company Kaschrom, a subsidiary of the Kazakh Company ERG for natural resources. The first ton of ferrous alloy was produced there in 1943.

Three pocket filters of series Infa-Jet AJN are the heart of a new central exhaust system. The order was also delivered by Infastaub RUS. The filter units are designated for exterior installation with temperature ranges from -40 to +40 °C. The cleaning unit of the filter is therefore built in a heated and thermally insulated protective housing. This way a flawless operating is also guaranteed during winter time.



Market place

You find the market place for used filter units [here](#).

Downloads

You find all manuals PDF files [here](#).

Trade fairs

You find all upcoming fair dates [here](#).

Newsletter

Sign up here for our [newsletter](#) and make sure to receive free tickets for our trade fairs.

Filter Units

- [Pocket filter](#)
- [Cartridge filter](#)
- [Bag filter](#)
- [Pleated element filter](#)
- [HEPA filter](#)
- [Shaking filter](#)
- [Top filter](#)
- [Special applications](#)

Solutions

- [Industries](#)
- [Dedusting tablet production](#)
- [Dedusting sack emptying](#)
- [Dedusting waste recycling](#)
- [Dedusting production of baby food](#)
- [Dedusting ship unloading](#)
- [Silo dedusting](#)
- [Dedusting steel production](#)

After-Sales

- [Service features](#)
- [Spare parts service](#)
- [News](#)

Dust Removal Knowledge

- [Encyclopaedia about dedusting](#)
- [Planning](#)
- [Cleanable filter](#)
- [Depth filter](#)
- [Explosion protection](#)
- [Filter media](#)
- [Legal regulations](#)
- [Glossary](#)

Company

- [Contact](#)
- [Legal notice](#)

- [General terms and conditions](#)

News

- [News](#)
- [Newsletter](#)

Downloads

- [Infastaub.de](#)

Contact

Infastaub GmbH

Niederstedter Weg 19
61348 Bad Homburg v.d.H.
Tel.: +49 6172 3098-0
Fax: +49 6172 3098-90

infa@infastaub.de

- [Imprint](#)
- |
- [Legal notice](#)
- |
- [Hinweisgebersystem](#)
- |
- [General terms and conditions](#)
- |
- [Site map](#)

Copyright © Infastaub GmbH